

LEGEND LAKE ESTATES

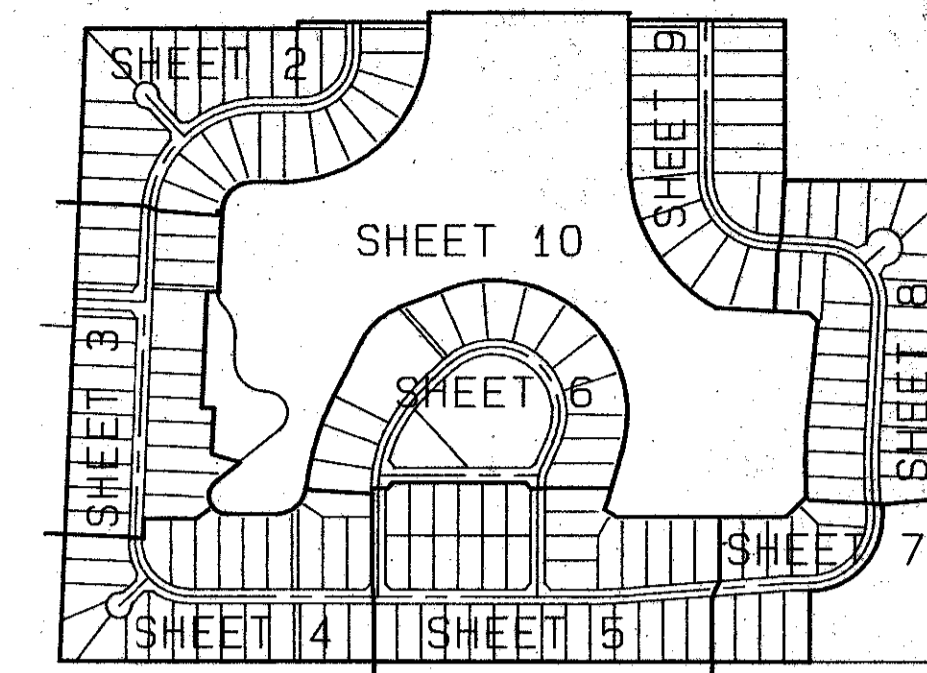
A REPLAT OF A PORTION OF "THE HUNT", P. U. D., PLAT BOOK 32, PAGES 119 THOUGH 125
SITUATE IN SECTION 30 AND 31, TOWNSHIP 44 SOUTH, RANGE 42 EAST,
PALM BEACH COUNTY, FLORIDA.

JANUARY, 1992

SHEET 7 OF 10

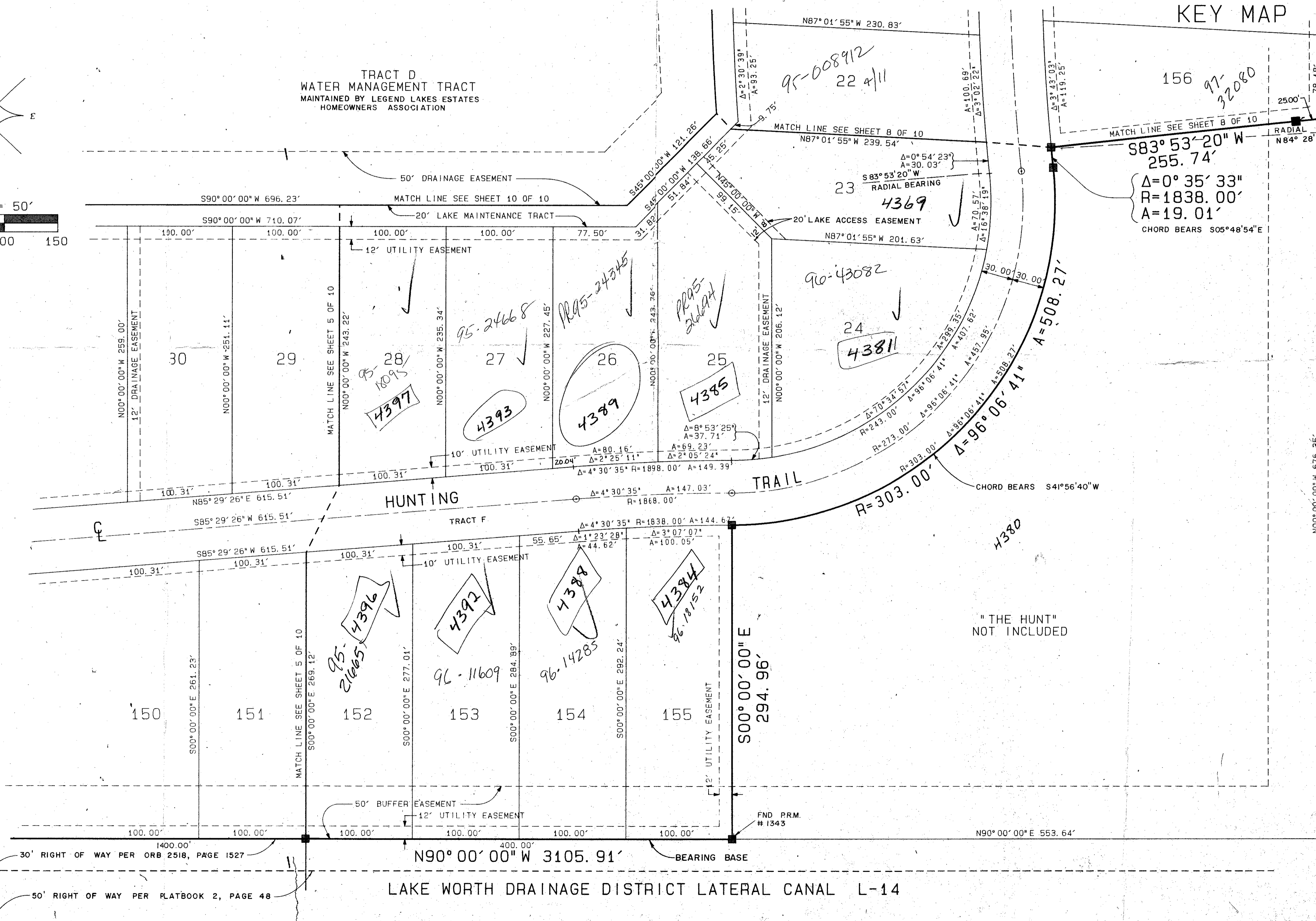
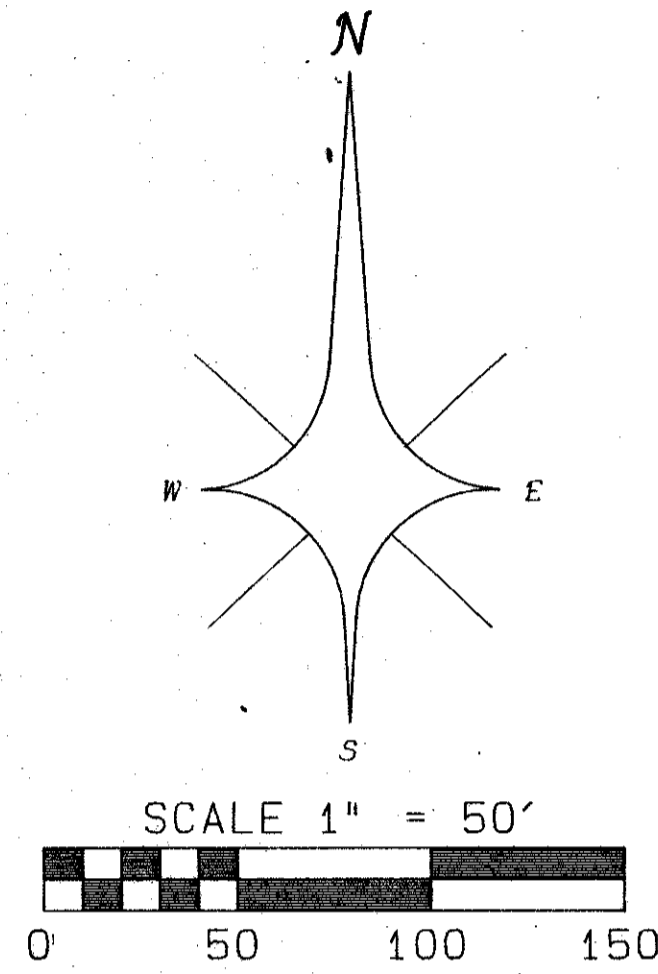
0467-001

45



STATE OF FLORIDA }
COUNTY OF PALM BEACH } SS
THIS PLAT WAS FILED FOR
RECORD AT _____ DAY OF
THIS _____ AD, 1992 AND
DULY RECORDED IN PLAT BOOK
ON PAGES _____ AND

Miller T. Bauer, CLERK
CIRCUIT COURT
BY: _____ DC



PALM BEACH FARMS CO. PLAT No. 3
TRACT 55, BLOCK 27,
PLAT BOOK 2, PAGES 45-54

SUBDIVISION * LEGEND LAKE ESTATES
BOOK 69 PAGE 45
FLOOD ZONE B FLOOD MAP # 170A
C/D # 48 ZONING RE
SE ZIP CODE 33467
PUD NAME THE HUNT
303/442

T&Z-738

RTS/PRD
87.4
PET. [REDACTED]
ALLOC. #0001
COLLECT

0467-001
69/45

ATLANTIC - CARIBBEAN MAPPING, INC.
PROFESSIONAL LAND SURVEYORS
OAK RIDGE BUSINESS PARK
1860 OLD WOODBRIDGE ROAD, SUITE 200
WEST PALM BEACH, FLORIDA 33411
(407) 687-5898 FAX (407) 687-5897

90181 LEGEND LAKE ESTATES
RECORD PLAT